



Beaufort County Public Works Stormwater Infrastructure Project Summary

Project Summary: Powell Drive

Activity: Routine/Preventive Maintenance

Narrative Description of Project:

Project improved 2,741 L.F. of drainage system. Cleaned out 310 L.F. of channel and 2,431 L.F. of roadside ditch. Jetted (11) driveway pipes. Hydroseeded for erosion control.

Completion: Apr-15

2015-585 / Powell Drive	Labor Hours	Labor Cost	Equipment Cost	Material Cost	Contractor Cost	Indirect Labor	Total Cost
AUDIT / Audit Project	0.5	\$11.40	\$0.00	\$0.00	\$0.00	\$6.62	\$18.01
CCO / Channel - cleaned out	80.0	\$1,730.51	\$253.26	\$76.02	\$0.00	\$1,143.60	\$3,203.39
DPJT / Driveway Pipe - Jetted	22.0	\$491.48	\$230.12	\$24.57	\$0.00	\$329.01	\$1,075.18
HAUL / Hauling	83.0	\$1,797.90	\$660.60	\$680.23	\$0.00	\$1,199.12	\$4,337.85
HYDR / Hydroseeding	30.0	\$659.51	\$185.57	\$270.84	\$0.00	\$438.30	\$1,554.22
IUL / Infrastructure Utility Locating	3.0	\$57.84	\$0.00	\$0.00	\$0.00	\$36.63	\$94.47
ONJV / Onsite Job Visit	30.0	\$997.65	\$106.02	\$48.06	\$0.00	\$701.90	\$1,853.63
PP / Project Preparation	8.0	\$178.28	\$7.24	\$4.30	\$0.00	\$113.16	\$302.98
RSDCL / Roadside Ditch - Cleanout	116.0	\$2,395.24	\$612.55	\$88.07	\$0.00	\$1,641.54	\$4,737.40
STAGING / Staging Materials	16.0	\$332.00	\$14.16	\$5.34	\$0.00	\$228.72	\$580.22
2015-585 / Powell Drive Sub Total	388.5	\$8,651.81	\$2,069.52	\$1,197.42	\$0.00	\$5,838.60	\$17,757.34
Grand Total	388.5	\$8,651.81	\$2,069.52	\$1,197.42	\$0.00	\$5,838.60	\$17,757.34

Before



During



After



**Project: Powell
Drive Map 1**

**Activity: Routine/
Preventive
Maintenance**

**Project #:
2015-585**

**Township: Port
Royal Island**

**Completed:
April 2015**

Legend

TYPE

- River
- Creek/Stream
- River/Creek/Marsh BANK
- Channel (fka Outfall)
- Channel Pipe
- Lateral
- Lateral Pipe
- Roadside
- Roadside Pipe
- Road Pipe
- Crossline Pipe
- Driveway Pipe
- Access Pipe
- Bleeder Pipe

Cleaned out 670 LF of roadside
ditch. Hydroseeded for erosion
control.

Cleaned out 817 LF of roadside
ditch. Hydroseeded for erosion
control.

Cleaned out 944 LF of roadside
ditch. Hydroseeded for erosion
control.



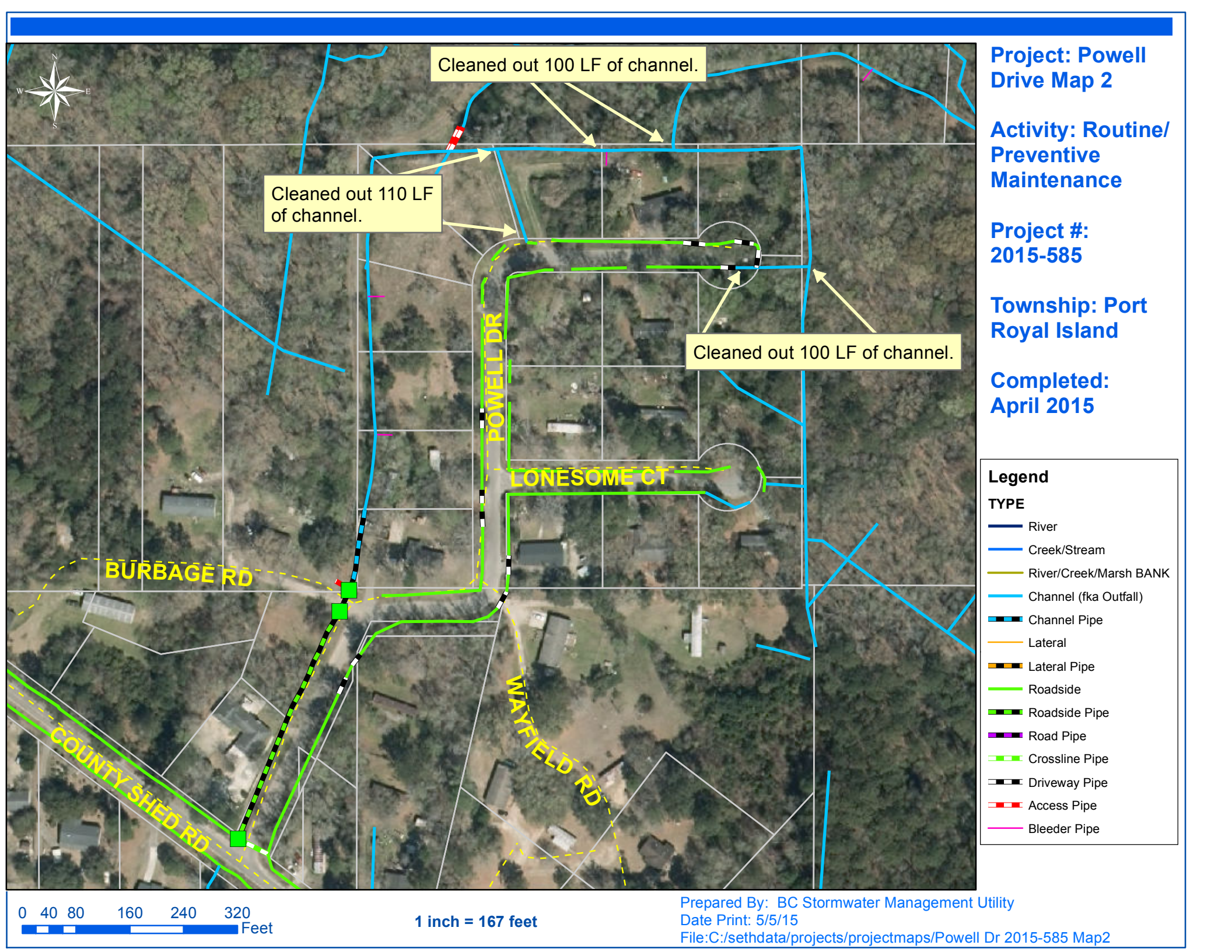
0 40 80 160 240 320
Feet

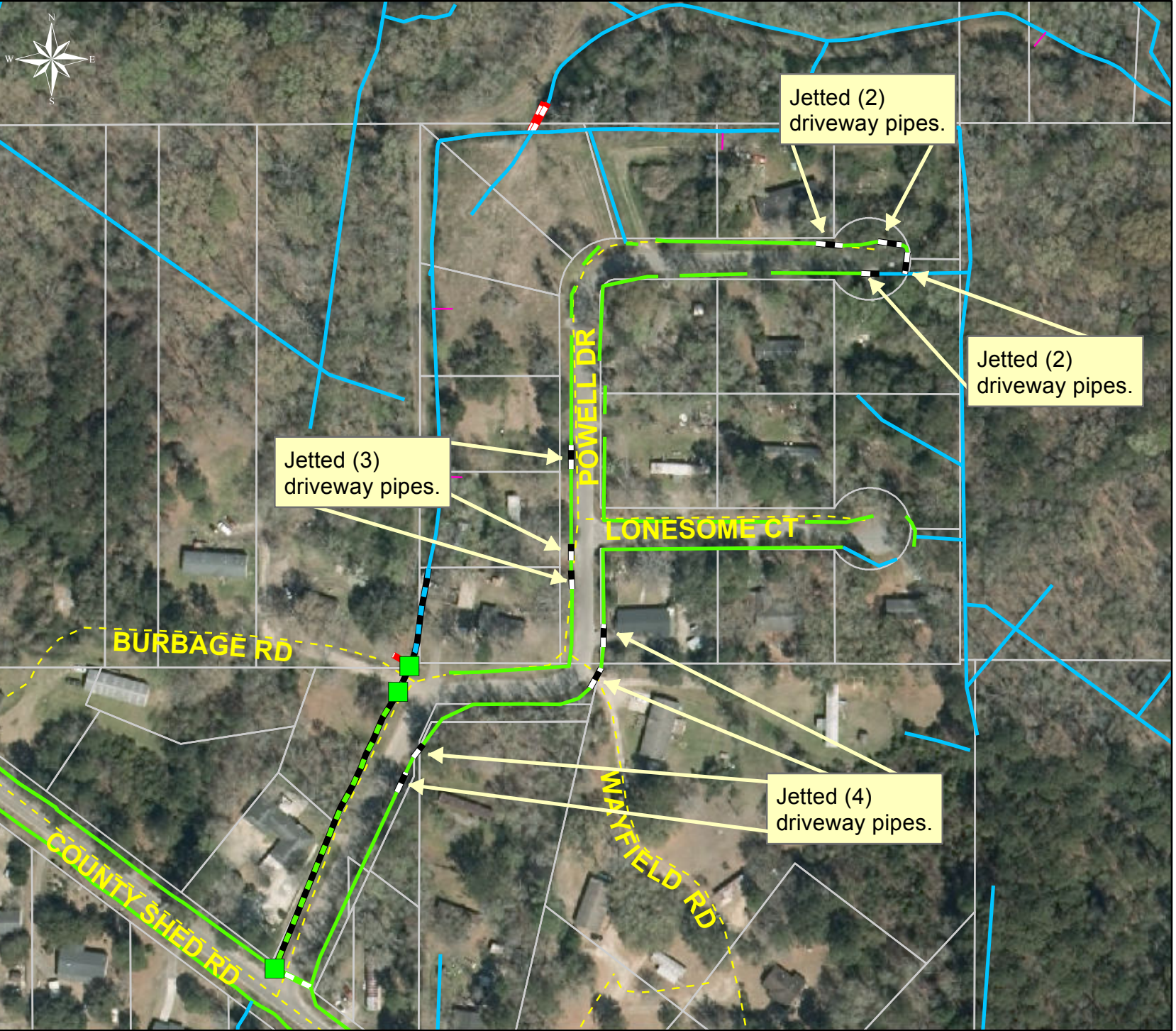
1 inch = 167 feet

Prepared By: BC Stormwater Management Utility

Date Print: 5/5/15

File: C:/sethdata/projects/projectmaps/Powell Dr 2015-585 Map1





Project: Powell Drive Map 3

Activity: Vacuum Truck

Project #: 2015-585

Township: Port Royal Island

Completed: April 2015

Legend	
TYPE	
	River
	Creek/Stream
	River/Creek/Marsh BANK
	Channel (fka Outfall)
	Channel Pipe
	Lateral
	Lateral Pipe
	Roadside
	Roadside Pipe
	Road Pipe
	Crossline Pipe
	Driveway Pipe
	Access Pipe
	Bleeder Pipe

0 40 80 160 240 320 Feet

1 inch = 167 feet

Prepared By: BC Stormwater Management Utility
Date Print: 5/5/15
File: C:/sethdata/projects/projectmaps/Vac/Powell Dr 2015-585 Map3